

Become part of a vibrant Mt. Airy community hub by locating your non-profit organization, or small business at Summit Church and Community Center. Summit Church has long been a host to Mt. Airy activities; home to a diverse group of non-profit organizations and a partner in building opportunities and meeting needs of Mt. Airy residents. We look forward to having you join our community.

Current and former members of our tenant community include: Summit Childrens Program, Free to Be Dance Academy, Weavers Way, Mt. Airy Learning Tree, P'nai Or Jewish Renewal Congregation of Philadelphia, Black Pearl Chamber Orchestra, Sports Reference, Network for New Music, Just Act.

**Become part of this growing community now!**

## ALSO AVAILABLE

**Event Rental Space:** ideal space for family and organizational events at Summit, including weddings and receptions.



# RENT OFFICE & EVENT SPACE

*in the Heart of Mt. Airy*



## LOCATION, LOCATION, LOCATION

Summit is a block from Weavers Way Food Co-op and High Point Cafe. The Upsal Station on the SEPTA Chestnut Hill West Regional Rail is a few blocks away. The H bus line runs a block away on McCallum Street, and the 53 bus line two blocks away on Wayne Avenue.



Weavers Way Food Co-op in the heart of Mt. Airy Village



ADA compliant access ramp

© 2017 Summit Presbyterian Church. Availability and rates subject to change, please call office at 215-438-2825 for the most current information.

## COMMUNITY CENTER AT SUMMIT CHURCH

6757 Greene Street (at Westview), Philadelphia, PA 19119  
215-438-2825 • [summitpres.net](http://summitpres.net) • [rentfromsummit.com](http://rentfromsummit.com)

## Space Available

### Second Floor Office Suites

The second floor of Summit's educational building includes a newly renovated 2400 sq. ft. space which consists of a large common area (1560 sq. ft.) and seven private offices of approximately 120 sq. ft. each. This space can be divided in half each with 3 or 4 private offices attached. (See diagram below).

#### Rates:

- Full Office Suite \$12 sq ft
- Half Office Suite \$13 sq ft
- Single Office \$350/month

All rentals include utilities and Wi-Fi access. Also available are use of a kitchenette and preferred rates for other meeting or event space rentals.



## Space Available

### Third Floor Office Suites

#### Suites 1 and 2

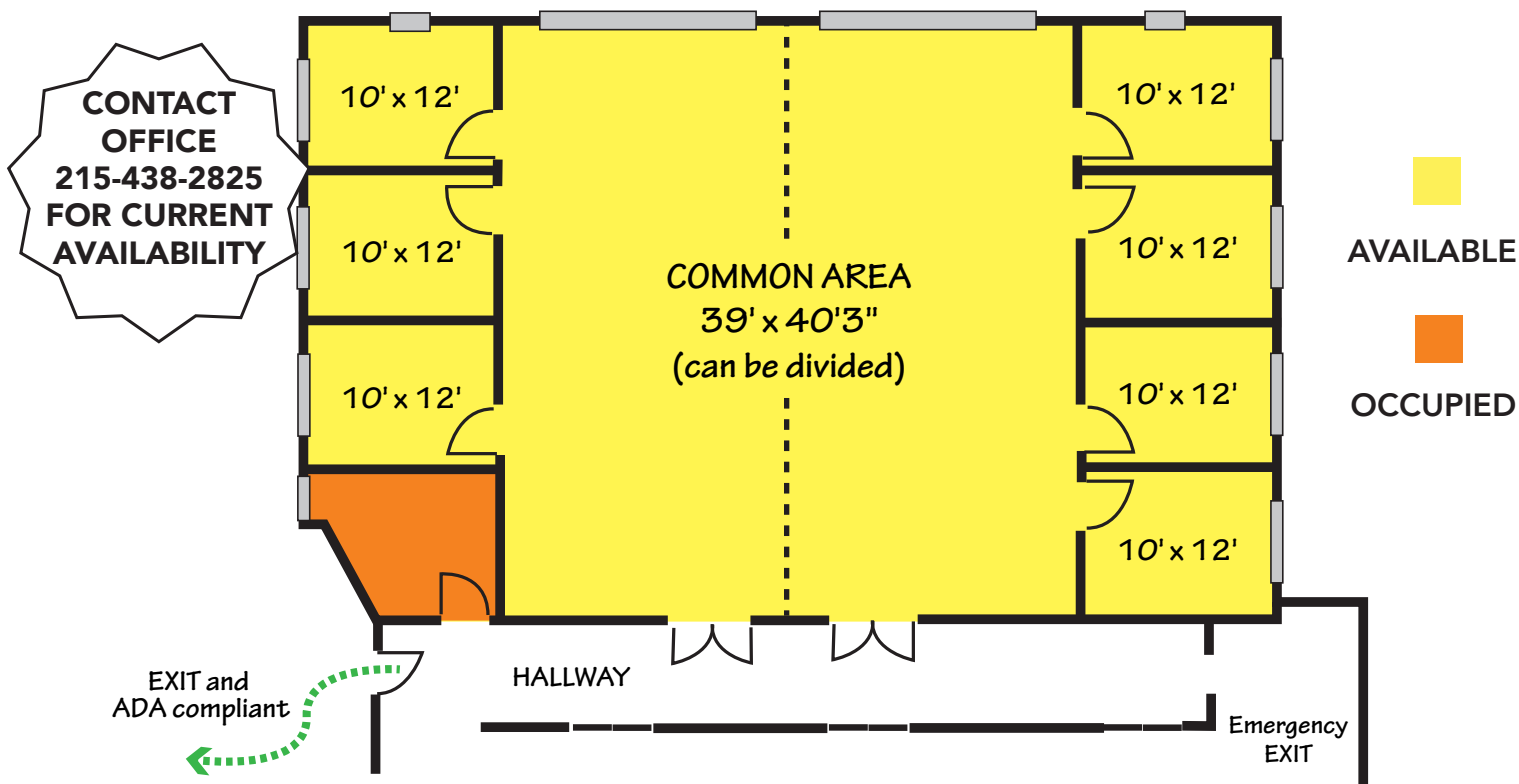
Two mirror image 1200 sf spaces, each including four enclosed offices which measure approximately 10 x 12 feet. Each suite includes a 20 x 40 feet open space.

#### Suite 3

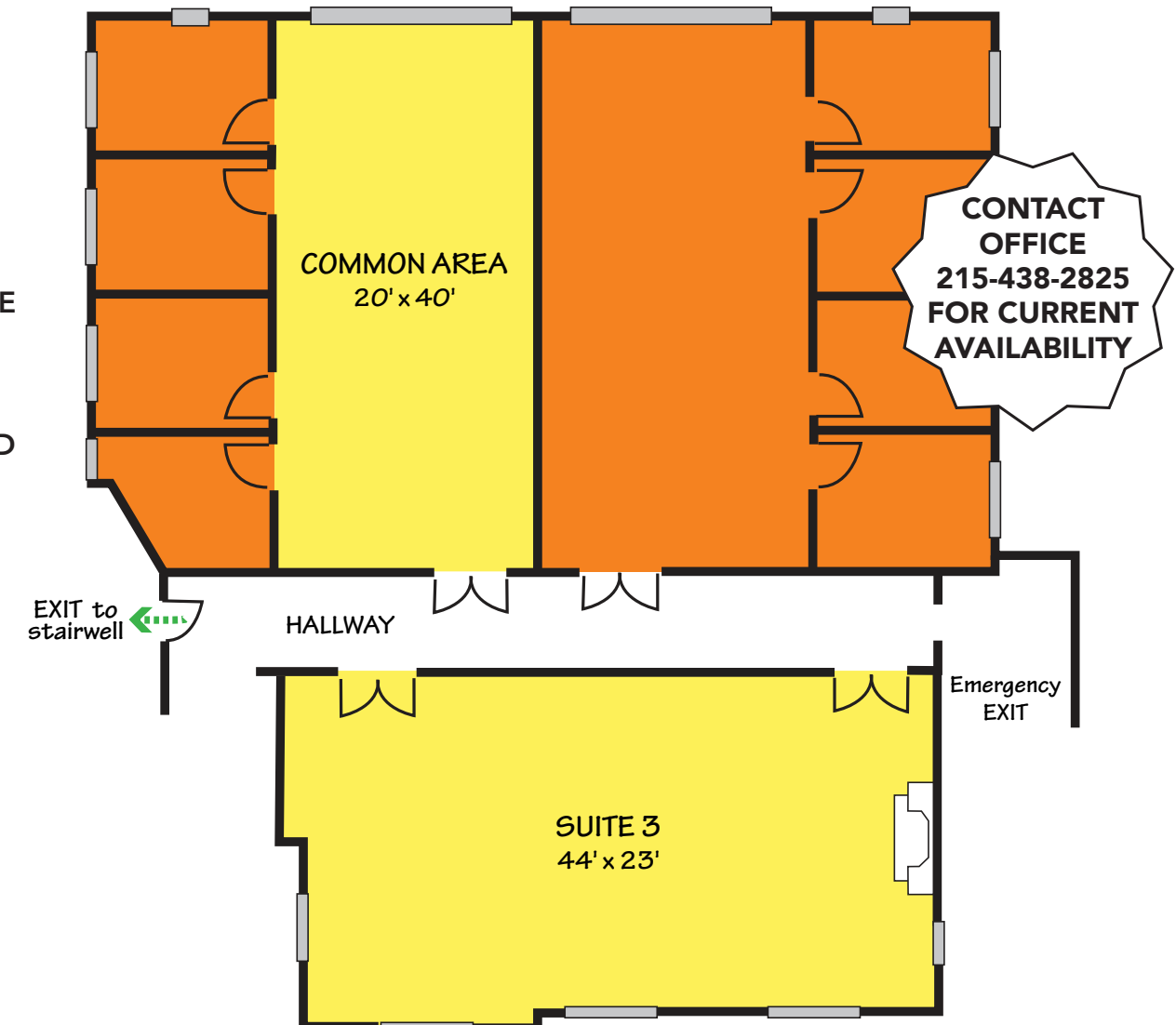
This large open room with a fire place and high cathedral ceiling measures 44 x 23 feet. This suite includes a kitchenette for use by tenants on the third floor.



### SECOND FLOOR SPACE



### THIRD FLOOR AVAILABLE SPACE



All tenants have access to several amenities, including:

- Free Internet
- Kitchenette
- Preferred access and rates to one-off rentals of Summit meeting spaces